



ETEK FZE - Company Profile

Think Beyond Automation

2017

ETEK FZE (Mirsal II Code: AE-1090544), License NO. 895, Silicon Oasis Free Zone, Building SIT Tower, 6th Floor, Office 607, P.O. Box: 341081.

Dubai, United Arab Emirates, Tel: +971 4 343 4218, Fax: +971 4 343 4219

Email: info@etek.me, Website: <http://www.etek.me>

About Us

EOTEK FZE is a UAE based technology provider that delivers a full range of products, services and support to clients within the GCC & Levant region. Our accomplished management team is comprised of industry and subject matter experts that together offer more than 20 years' experience in the industrial IT and industrial automation sectors. EOTEK is able to provide through a variety of established global vendors an extensive and diverse range of industry leading products.

We deliver a comprehensive range of industrial software platforms that include SCADA/HMI technology software, enterprise mobility, manufacturing operations and performance management (MES) and business engine development platform.

EOTEK provides pre sales support, consultancy services, on-site and offsite training and technical support. Our technical team are fully qualified and certified to offer the guidance, support and training required by our customers. In addition we also tailor and design cutting edge solutions, leveraging on our technologies and industrial components we are able to supply.

EOTEK understands the importance of enabling a successful, secure and sustainable operation. We provide in-depth industry and technology-specific expertise, consultancy services, solution definition & design and tailored training in order to fulfill customer challenges and meet their goals. Our undertaking and responsibility to our customers is to assist in reducing project risk and to implement solutions unique to market needs.

Our Core Values

ETEK's differentiation in the market stems from its most valuable asset: its people. We are proud to be staffed by a group of talented, experienced and multi-disciplined professionals guided by the foresight and pioneering vision of a strong leadership team.

Teamwork:

- By working together we are able to achieve more. Achievement and success goes hand in-hand

Excellence:

- By offering high quality and innovative products we strive for continuous improvement and excellence

Integrity:

- Honesty and open communication is the key to true professionalism and integrity

Dedication:

- We are committed to the success and achievement offering unrivalled dedication

Integrity:

- Honesty and open communication is the key to true professionalism and integrity

OUR MISSION

We aim to become the preferred supplier for integrated industrial technologies within the Middle East and Levant. We strive to become the market leader for our valued customers within the diversified market segments we serve.

OUR VISION

Our aim is to continually exceed our client's expectations. We achieve this by partnering with their business objectives and maximizing their performance outcomes by providing high quality technologies with competitive prices.

The fact that we are locally available to our clients enables us to provide them outstanding and unparalleled support within an efficient time scale.

Our Services

ETEK understands the importance of enabling a successful, secure and sustainable operation. We provide in-depth industry and technology-specific expertise in order to fulfill your specific challenges and meet your goals. Our undertaking and responsibility to you is to assist in reducing project risk and to implement solutions unique to your needs.

As your preferred partner, we ensure that we listen, understand and recognize your company culture and philosophy. We pay attention to your immediate issues, concerns and goals but also invest to understand the medium to long-term objectives required. When we are satisfied that we completely understand your individual situation, we use our wealth of in-house experience and partner resources to deliver tailored, viable and maintainable solutions.

Our service teams are versatile in the way they operate and offer flexibility to ensure your specific needs are met. Dedicated to operational excellence and efficiency, we constantly review and improve service levels to guarantee our clients' investments.



Solution Design

At ETEK, we pride ourselves on the unique and individual relationships we build with our customers. One of the ways we do this is by meeting their specific needs while focusing on the quality and cost effectiveness of the best in class services we provide. The safe manner in which we go about our business and the provision of skilled and reliable people to ensure that our interaction with our customers is the best it can possibly be is another.

- ❖ Solution Architect: Translates a customer's need or objective to a viable solution with either Hardware or Software or both in order to meet requirements. Propose a cost effective and reliable solution
- ❖ Pre-sales and sales activities: Our sales and pre sales teams are able to present and respond to specific customer needs and requirements. Their technical expertise ensures that required compliances, product demonstrations and technical proposals are efficiently and competently handled.

Consultancy Services

We offer fully scheduled, part-time services or as a when required services in order to help you meet your specific needs throughout the lifecycle of your individually project / service. Our consultants are available to provide expert assistance with product installation, upgrades, and product best practice services. Our Consultancy Services are available to you anytime. We can assist during the pre-and-post-implementation stages of your project and where there is a utilization of any of our specific technologies.

Product Training

Our extensive, adaptable training portfolio is concentrated on assisting and ensuring our customers develop their workforce so that they are predisposed to meet any challenge – and ultimately, improve production, lower turnover and increase employee morale. Individually tailored industrial specific training can be delivered by our echo training partners.

In addition to our standard WebAccess SCADA training, We offer special training on specific industry standards, protocols and best practices for our customers. Below list is an example of training courses we can offer.

- ✓ OPC, DNP3, IEC 61850 Protocols
- ✓ IEC 61131 Programming Standards
- ✓ OEE Standards
- ✓ ISA-95 Standards
- ✓ CMMS Best Practice
- ✓ HMI Best Practice

Technical Support

Our team of Product Support Specialists and Certified Application Engineers are ready to answer your questions and help you solve your technical issues. Whether you need; guidance installing, configuring and maintaining equipment and software, diagnosing and fixing operating problems or performing basic programming tasks. We deliver the tools and answers that you need to keep your industrial automation equipment and system up and running.

Special Services Support

We provide Special Services Support that includes special integration implementations, SCADA/Telemetry, Integrated Building Management System, MES/MIS, Condition Based Monitoring (CBM) and Computerized Maintenance Management System (CMMS) implementation, Access Control, Gate Barriers solutions and smart Surveillance Systems

IOT Solutions for Smart Cities

Today's embedded devices have the ability to communicate, transforming simple dedicated devices into, "Interconnected Smart Devices". In the Internet of Things (IoT) era, where wireless network is everywhere, intelligent systems require more and more storage and memory. Already, many kinds of I/O sensors for smart city applications are creating more convenient, efficient and safer urban environments. But IoT applications are getting complicated due to the need for smarter, faster and more accurate intelligent systems.

In response to this trend, ETEK through Advantech, provide embedded M2M/IoT module integration services in order to minimize the workload of system integrators. We provide a wide range of reliable wireless solutions for M2M communication including Bluetooth, Wi-Fi, 3G/LTE and GPS modules. Edge computing platforms are also available with WSN and IoT gateways. All of Advantech's intelligent devices and systems can serve as computing applications for data acquisition and intelligent action control.

Our Partners:

[1] Advantech CO., LTD:

Advantech founded in 1983, Advantech is a leader in providing trusted innovative embedded and automation products and solutions. Advantech offers comprehensive system integration, hardware, software, customer-centric design services, and global logistics support; all backed by industry-leading front and back office e-business solutions. Advantech has always been an innovator in the development and manufacture of high-quality, high-performance computing platforms. We cooperate closely with our partners to help provide complete solutions for a wide array of applications across a diverse range of industries. To realize our corporate vision of Enabling an Intelligent Planet, Advantech will continue collaborating and partnering for Smart city & IoT Solutions.

ADVANTECH

Enabling an Intelligent Planet



Advantech 3-Circle Principle is based on "Good to Great" written by Jim Collins. According to the book, a company looking for long-term success should clearly address the 3-fundamental principles, and commit to long-term solid execution of these principles. Advantech is fully convinced by this theory so we adhere to it by clearly defining Advantech's 3-Circle Principle as above.

■ Advantech Product Ranges:

- Industrial Automation
- Embedded Computing
- Network and Communication

■ Advantech Contact Info:

Address: No. 1, Alley 20, Lane 26, Rueiguang Road, Neihu District, Taipei 11491, Taiwan, R.O.C.

Phone: 886-2-2792-7818

Website: <http://www.advantech.com/>

[2] CARLO GAVAZZI:

Carlo Gavazzi is an international group active in designing, manufacturing and marketing electronic equipment.

The Group's products (sensors, monitoring relays, timers, energy management systems, solid state-relays, safety devices, fieldbus systems) provide automation solutions for the global markets of industrial and building automation.

Typical customers are original equipment manufacturers of packaging machines, plastic-injection molding machines, food and beverage production, conveying and material handling equipment, door and entrance control systems, lifts and escalators as well as heating, ventilation and air conditioning devices.

Carlo Gavazzi's products are marketed across Europe, the Americas and Asia-Pacific through a network of 22 own sales companies and through more than 60 independent national distributors.



■ Carlo Gavazzi Product Ranges:

- Sensors
- Switches
- Controls
- Fieldbuses

■ Carlo Gavazzi Contact Info:

Address: Carlo Gavazzi Automation SpA, via Milano 13, I-20020 Lainate (MI) - Italy

Phone: +39 02 931761

Website: <http://www.gavazziautomation.com/>

[3] Aquas Inc.:

Aquas Inc. Taiwan based Manufacturer of smart integrated sensors, telemetry systems, and cloud-based SCADA and data management systems used in the water, gas, environment, infrastructure, industries at thousands of sites across the globe.



Their products are all designed for accuracy, reliability, flexibility, ease of use and low maintenance. All manufacturing processes follows the highest industrial standards and certificated by ISO9001.

More than 20 years experiences and tens of thousands systems installed in cities around the world, AQUAS has created a truly unique suite of field proven technologies that are unmatched in the industry including battery powered, rugged and all-weather, plug-and-play sensors, real-time telemetry systems, and cloud- based SCADA servers.

■ Aquas Products Focus Area:

- Municipal Water
- Stormwater
- Surface Water and Groundwater
- Industry, Agriculture, Fishery, Commercial Water
- Wastewater
- Gas
- Petrochemical
- Meteorology

■ Aquas Contact Info:

Address: 11F-3, No. 408, Ruiguang Rd., Taipei 11492 - Taiwan

Phone: +886-2-8797-5358

Website: www.aquas.com.tw

[4] MOBILEFRAME:

MobileFrame is a leading enterprise mobility platform, helping businesses to replace paper-based processes with mobile solutions that improve their bottom-line.



They pioneered the enterprise mobile apps industry, offering the first rapid mobile app development & deployment platform. And they're still the only solution designed specifically for business applications.

Their revolutionary Smart Architecture™ uses a graphical interface and visual workflow design that allows developers and non-developers alike to instantly create, manage, and deploy sophisticated mobile apps code-free. All programming, database, synchronization, and deployment complexities are handled in the background so they are transparent to the business user. These features make MobileFrame software readily adaptable to changing business processes.

■ MobileFrame Contact Info:

Address: 101 Blossom Hill Rd, Los Gatos, CA 95032 - USA

Phone: (408)885-1200

Website: <http://www.mobileframe.com/>

[5] Production Process:

Production Process was founded in 1972 to develop custom controls and instruments. Industry acceptance of our patented single function data display instruments (30,000 in the field) led to the development of intelligent communicating, multi-function instruments—Machine Data Transducers (MDT). Our supporting Windows software – ProductionACE—continues to evolve with additional capabilities. Because of its simplicity and “universality” of application, our systems are being installed in every type of discrete parts manufacturing process.



ProductionACE OEE System

ProductionACE works in conjunction with Machine Data Transducers to provide real-time visibility into ANY manufacturing process—from a single plant to multi-site operations. ProductionACE can also connect your manufacturing operations to any ERP and EAM/CMMS application. Main features include:

- Downtime Tracking Collect, analyze, eliminate causes for downtime and rejects.
- OEE Monitoring Track machine status, analyze, and improve production efficiency
- Manufacturing Scheduling Visual production scheduler produces real-world forecasts.
- Preventative Maintenance/TPM Schedule maintenance based on actual equipment run hours and cycles.
- Production Reporting Eliminate manual data collection, transcription.
- ERP Interface Tie master production schedule to shop floor for dynamic scheduling, accurate Job completion forecasts, automatic WIP/inventory updates.
- Complete OEE Systems Inform, empower, motivate, and improve by adding Lean Manufacturing Andon Displays for a complete system.

- **Production Process Contact Info:**

- **Address:** 61 Harvey Road Londonderry, NH 03053 USA
Phone: (603) 434-2300
Website: <http://www.productionprocess.com/>

ADVANTECH SOLUTIONS

Environmental Monitoring & Facility Management

Advantech has been dedicated to developing Environmental Monitoring & Facility Management Systems for many years, especially in dealing with the unique requirements for the water industry. Advantech's value-added systems and solutions through high-volume SCADA and advanced web-based technology allow users to monitor and operate processes anytime, anywhere. Moreover, Advantech offers a wide range of video surveillance, communication, and data acquisition modules with various interfaces. These systems are built with redundant topologies that can be reliably operated even over a long distances and easily integrated with other GPRS systems as well.

Water & Wastewater Treatment



Water & wastewater treatment plants consist of treatment pools, mixers, pH control pools, and precipitation pools, requiring different process functions and equipment. APAX-5000 & Advantech's Open Embedded Controllers, integrated with Advantech WebAccess, provide complex process capabilities and quality control.

Pipeline Monitoring



Remote monitoring of pipeline pressure, temperature, flow and leakage is necessary and crucial. Advantech's GPRS device servers, along with APAX-5000 & ADAM-4000/6000, serve as remote monitoring devices. Advantech WebAccess is installed in the central room to monitor values and assess pipeline operations.

Pumping Station Monitoring & Control



When controlling and maintaining many pump stations remotely, remote transaction is a key issue. Advantech's GPRS devices, Wireless LAN, and fiber optic capabilities provide reliable transaction inquiries, while the APAX-5000 standalone controller handles process applications.

Disaster Prevention



Advantech's real-time monitoring & control system allows users to not only monitor I/O information from the field, but also provide video surveillance displays through Advantech's redundant X-ring topology to ensure reliable communications.

Product Solutions

Software



Advantech WebAccess
Browser-based HMI/SCADA
Software

Communication



EKI-1322
RS-232/422/485 to GPRS
IP Gateway

Controllers



UNO-1174H
DIN-rail PCs with Class I,
Division 2 Certification



APAX-5620
PAC with XScale®
CPU and CANopen

Video



NVS-3520
H.264 IP Video Server



ADAM-4000
RS-485 I/O Modules

I/O



ADAM-2051PZ
Wireless 8-ch Digital
Input Node with Power
Amplifier

Building Automation & Energy Management

Increase Energy Efficiency with Open and Web-enabled Technologies Integrated facility management systems are becoming more popular as they help make building operations run more efficiently through advanced control and connectivity. In addition to integrated facility management, video surveillance systems offer advanced security for facility managers. Advantech's Building Automation and Energy Management Solutions offer browser-based software and comprehensive hardware packages for a variety of applications, including Advantech WebAccess, Advantech's BACnet controllers and remote I/O modules, energy data concentrators, and power meters. It enables engineers, system integrators and equipment manufacturers to maintain and upgrade their systems remotely.



Integrated Facility Management Systems

Integrated Facility Management Systems enable facility managers to orchestrate various building automation systems within one or multiple facilities. Remote management capabilities help maximize energy efficiency for many applications, such as HVAC, lighting, and surveillance.



HVAC System Management

Reducing power usage of HVAC equipment is the most effective way to decrease costs as it is a major source of power consumption. Executing energy saving methods through employing cooling storage, improving cooling towers, and adopting secondary chilled water pumps is useful to optimize energy efficiency.



Lighting Control Systems

Lighting systems are secondary parts of power consumption. By implementing automated lighting control systems and day lighting schemes as well as offering environmentally friendly lighting is very important for facility managers.



Video Surveillance Systems

Video surveillance systems play an increasingly important role in the security of building automation. They offer secure environments and protect assets for multiple buildings by continuously improving the images which are monitored, analyzed, and archived to enhance effectiveness.

Product Solutions

Software	Industrial Computers	RTU	Video	I/O
Advantech WebAccess Browser-based HMI/SCADA Software	WebAccess IVS Surveillance Software	IPC-610H 4U 14-Slot Rackmount Chassis	ADAM-3600 Wireless Intelligent RTU	EKI-2525 5-Port Industrial Ethernet Switch
				ADAM-6050 18-ch Isolated Digital I/O Modbus TCP

Machine Automation & Factory Automation

Advantech prides itself on being a leading industrial solutions provider; with over 25 years' experience creating robust and reliable industrial products. Advantech's solutions are rooted in factory and machine automation markets, from automatic testing machines and machine inspection, to production, packing and process automation, Advantech not only offers rugged products, but provides professional consulting services to help its suitable customers develop successful applications for a variety of different applications. Now with products that meet the Class I, Division 2 certification for use in hazardous environments, Advantech extends the reach of its professional products even further.

Automatic Testing and Inspection

Quality control systems have become very expensive in recent years, creating the demand for more cost-effective alternatives. Along with automatic testing and inspection systems, Advantech's products help reduce human error and accelerate time to market.



Production Automation

Open, embedded architectures with excellent expansion capabilities and high compatibility, and flexible and scalable PACs allow Advantech's customers integrate equipment from a wide range of manufacturers into their systems, and help them meet ever-changing market demands.



Packing Automation

Delivering a high degree of durability with a low total cost of ownership is a key factor for efficient packaging. By integrating a high-precision motors and high-speed data acquisition cards, packaging machines are able to improve performance greatly, setting up flexible systems that can reduce costs at the same time.



Process Control

High computing systems with scalable architectures and time-deterministic control are important factors for process control systems. Advantech's solutions allow customers to integrate production information into MES and CIM systems, and fulfill discrete, batch and continuous process control.



Product Solutions

HMI



TPC-1551WP
15.6" Touch Panel
Computer

Controllers



UNO-3084
Wallmount Automation
Computer



APAX-5000
Programmable
Automation Computer

Communication



EKI-2748FI
8Gx Managed Ethernet
Switch

Motion



PCI-1245/1265
Motion Control
Universal PCI Card



PCI-1710U
Multifunction PCI Card

I/O



AMAX-1240
High performance 4-
axis AMONet Motion
Slave Module



**ADAM-4000/
ADAM-6000**
Remote I/O Modules

Intelligent Transportation System (Smart City)

Transportation systems aim at providing communications and technology that allow safe, convenient, comfortable, efficient, and environmentally friendly travel for all commuters. Many cities worldwide are in the midst of improving their transportation system infrastructures, and Advantech is there to provide a helping hand by providing advanced product solutions for the transportation market. Advantech offers cost-effective solutions for traffic monitoring system for railway (station, onboard train, wayside control), freeway (dynamic weighing, tunnel monitoring, passenger information display, entrance control, electronic payment), and other transportation applications.



Railway Stations

The rapid acceptance of Ethernet-based networking in railway infrastructures is providing many subtle benefits to traveler's worldwide. Train station applications cover fire alarm systems (FAS), automatic fare collections (AFC), passenger information systems (PIS), and control room.



Onboard Train and Rolling Stock

Today's train information systems are the key communication link between transportation operators and the traveling public. Onboard train applications cover driver control, passenger information systems (PIS), in-seat video entertainment systems, and IP surveillance.



Freeway Management and Information Display

Freeway management programs support and promote the use of integrated and coordinated systems to provide proactive freeway management that improves the safety efficiency and reliability of travel on freeways and highways worldwide.



Electronic Payment

Electronic payment systems are very public and the major key is in providing reliable collection systems. Advantech's solution is targeted at simplifying payment for customers and helping reduce congestion at the exits to parking facilities and toll booths.

Product Solutions

HMI	Industrial Computers		Controllers		I/O		
							
TPC-1551WP 15.6" Touch Panel Computer	EKI-6332GN Wi-Fi AP/Client	EKI-6332GN Wi-Fi AP/Client	EKI-6558TI EN50155 Switch	UNO-2173A Energy Efficient Automation Computer	APAX-5620KW Programmable Automation Computer	ADAM-4000/ADAM-6000 Remote I/O Modules	PEC-1710A Integrated I/O Controller

Power & Energy Management

Power supply and demand are becoming more and more critical. Substation automation, T&D grid automation, renewable energy, power generation & transmissions, energy management systems and maintenance-free power backup systems with IEC 61850-3 compliance are the big trends in today's applications. Power Automation improves energy efficiency and intelligence while also implementing important environment protection and green powered features. Advantech is proud to develop reliable HMIs, Open Embedded Controllers, Managed Switches and Programmable Automation Controllers to serve this market.



Power Generation

Advantech provides reliable and high performance components to help customers develop more efficient power backup solutions, nuclear simulation system and a generator monitoring system and more.



Power Distribution

Advantech's Substation Automation Solutions provide robust IEC 61850-3/IEEE 1613 compliant devices and components, computing platforms, protocol gateways and networking switches to ensure interoperability and interconnection between substations and power systems.



Renewable Energy

With harsh environment factors, such as drastic day-night temperature differences, dust/sand storms, vibration, heat and electrical noise, Advantech provides rugged, reliable and real-time communication, monitoring, tracking, testing and DAQ control solutions for renewable energy applications.



Electric Car Charging Stations

Advantech's touchscreen controlled industrial computer systems, serial modules, switches and data acquisition modules serve as system components for data acquisition and transmission among separate EV/PHEV charging posts, with precise monitoring and control.

Product Solutions

HMI



TPC-1551WP
15.6" Touch Panel
Computer

Controllers



APAX-5620KW
Programmable
Automation Computer



APAX-5000
Programmable
Automation Computer



UNO-1370G
Intel® Atom™ N270
DIN-rail PCs



UNO-1170A
IEC 61850-3/ IEEE 1613
Automation Computer



ESP-9223
High Performance
Industrial Ethernet Switch



EKI-7559SI/MI
8+2 SC-type Fiber Optic
Managed Ethernet Switches



APAX-5017H
12-ch High Speed
Analog Input Module

I/O

AQUAS SOLUTIONS

Storm-water Solutions

Storm-water Runoff Monitoring and Flood Early Warning



This system allows the monitoring of rainfall, ground water level, geological condition, noise and images of areas that are prone to flood disasters. Through the analysis of historical data and the results from monitoring, one will be able to forecast disaster warnings, provide the basis for decision making, and in turn, secure the lives and property of the people.

River Flow and Level Monitoring



The River Hydrographic Monitoring System allows users to accurately and immediately obtain river related information such as rainfall and flow condition. Basic hydrological information, GIS, communication, data, keyword searches, analysis, and alarms are available on this platform. With such information, users are able to know real-time precipitation of the rivers, water level, flow rate and volume etc., and will be able to make management related decisions as well as sending out alarms. This system also has functions such as timer camera and uploading real- time videos whenever an anomaly occurs. These functions enable the provision of accurate information for

Flood Gate and Pumping Station Control



AQUAS Solution has given assurance on water allocation efficiency for achieving the goal, of water saving irrigation & water quality monitoring, to prevent pollution by poisonous wastewater discharged by factories. Incorporates with intelligent gate, pumping stations, water level and water quality monitoring, it makes adequate water allocation automatically on the irrigation area possible.

Combined Sewer Flow and Level Monitoring



The occurrence and increased-frequency in natural disasters like storms, tropical cyclone and typhoons, plus the scale and development of city modernization is expanding; altogether inspired the innovation of intelligent AQUAS Solution to be born. It applies advance flood warning controlling to monitor rainfall, river level and regional flooding. It forms a positive loop as precaution to prevent traffic standstill and life endangerment by controlling the stationary pump station, gate, gate valve, temporary mobile drainage pumping and those easily ponding areas (e.g. underground tunnels and under the overpass).

Product Solutions



Pro Series



ECO DataLogger



MAX
Multiparameter
Water Quality
Monitoring Sonde



ONE Datalogger/
Wireless Controller



LPS Leakage
Detection Noise
Logger

Drinking Water Solutions

Pressure and Flow Monitoring

AQUAS integration of advanced solution applies the most edgy energy saving technology with a complete integration of monitoring on water pressure and flow in water distribution network, and real-time alarm detection such as pipeline break, negative pressure, water hammer and abnormal flow.



Water Quality Monitoring

AQUAS Solution helps to meet requirements in compliant to National Drinking Water Management and drinking water safety. Designed to provide continuous monitoring of the residual chlorine, turbidity, PH value, ORP, electric conductivity and temperature, it uploads data to the cloud server via wireless communication. It makes intelligent logical judgment based on water usage amount, pressure and residual chlorine for adequate dosage dynamically in accordance to national standards. It functions well even under sever circumstances such as no electric powered and frequent flooded areas.



PRV Control

AQUAS has adopted PRV Dynamic Control to monitor dynamic pressure adjustment. It reduces leakage and eliminate negative pressure in water distribution network, and greatly enhance water supply efficiency.



Leakage Detection and Analysis

AQUAS Solution effectively constructs a stable water supply system via continual monitoring of water level and quality in the distribution network and sends those data back to the control center server. In accordance with the regional required quantity, level and plans of application, it also helps moderate the remote water purification plants and pump stations.



Product Solutions



Pro Series



ECO Datalogger



MAX
Multiparameter
Water Quality
Monitoring Sonde



ONE Datalogger/
Wireless Controller



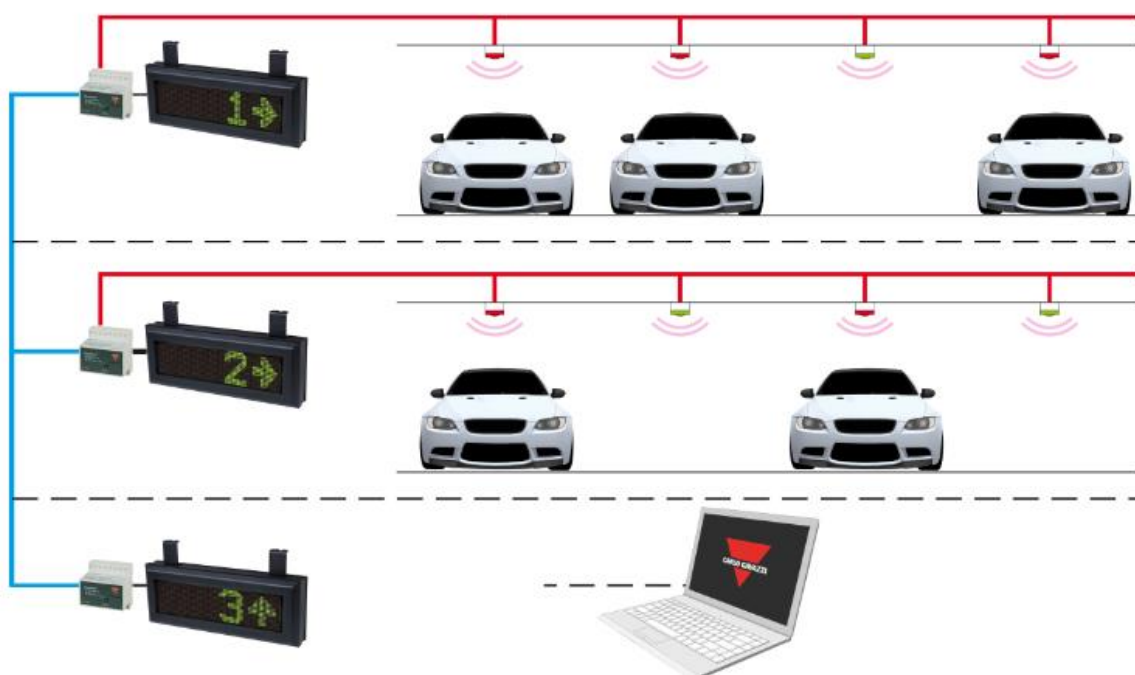
LPS Leakage
Detection Noise
Logger

CARLO GAVAZZI SOLUTIONS

Carpark Guidance System

Carlo Gavazzi's Dupline parking guidance system guides drivers to the right spot. This new innovative system saves time and reduces stress for drivers by leading them to free parking bays by the shortest possible route. Networked ultrasonic sensors monitor parking bay occupancy, and intelligent displays show the number of free places in the pointing direction, thereby preventing drivers from entering driveways or areas with no free places. The system is completely scalable and can be used within any type and size of indoor parking lot. In spite of the advanced function, the system is surprisingly easy to install and configure.

Users of busy parking will experience an improved parking service, resulting in a high perceived value. Precious time is saved, the level of comfort is increased, and furthermore, the stress and emotion created by the search and "fight" for free places is avoided



Product Solutions



Master Module



Carpark Monitor



LED Sensors



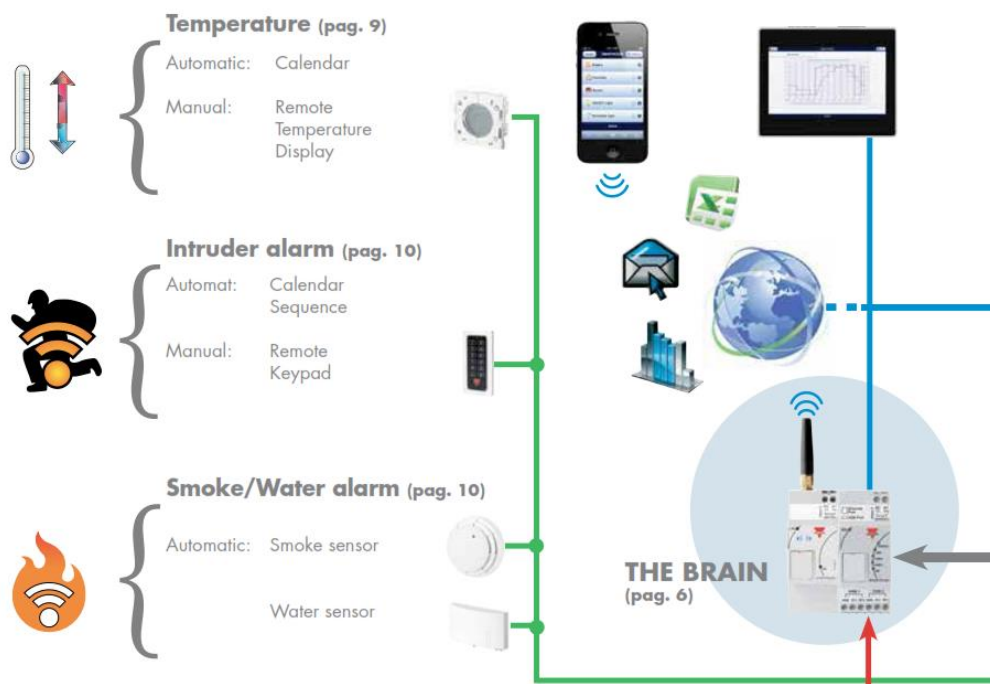
Carpark Displays



Count Module

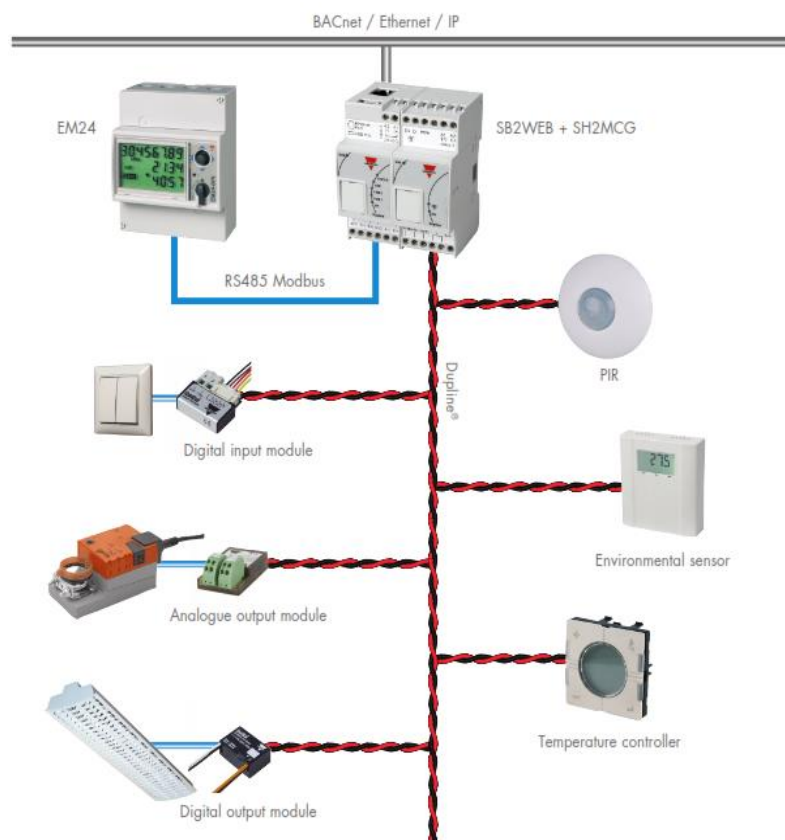
Home Automation System

With its new smart-house system, Carlo Gavazzi delivers a new way of designing a house or a building, thanks to its flexibility and modularity. It is based on a patented digital bus, the two-wire Dupline[®] bus, very powerful in transmitting all the information needed in building automation. Thanks to the bus concept, the system can be expanded at any time without important structural changes in the installation and with excellent management of the costs. Furthermore, the functions can be changed and/or updated very easily by means of a software at any time and from anywhere, also remotely. Thanks to this, the smart-house system is always alive, dynamic, and easily adapted to the evolving requirements of the home owner and to the fast -progressing world of high technology. The smart-house system delivers complete solutions for home automation, including lighting scenarios to select the best ambience, shutter control to regulate perfect light and shade, temperature management to combine optimum comfort with optimum efficiency, intrusion, flooding and smoke monitoring to protect from any burglary or damage to the house, a scheduler to program all events and basic functions. All this creates very special automation. The system also includes energy monitoring, logging power, water and gas consumption and whatever information is present on the bus (temperatures, humidity, light level,). All this data is available on graphs, just by using a smart device or a PC, thanks to the embedded webserver. Moreover, the system is an open platform designed for easy and fast integration with products from other companies, since we use protocols based on TCP/IP, for which we deliver the complete documentation.



Smart Building System

Carlo Gavazzi delivers a new way of designing a house or a building, thanks to its flexibility and modularity. It is based on a patented digital bus, the two wire Dupline bus, very powerful in transmitting all the information needed in building automation. The system can be expanded at any time without important structural changes in the installation and with excellent management of the costs. Furthermore, the functions can be changed and/or updated very easily adapted to the evolving requirements of the home owner and to the fast progressing world of high technology. The smart house system delivers complete solutions for home automation, including lighting scenarios to select the best ambience, shutter control to regulate perfect light and shade, temperature management to combine optimum comfort with optimum efficiency, intrusion, flooding and smoke monitoring to protect from any burglary or damage to the house.



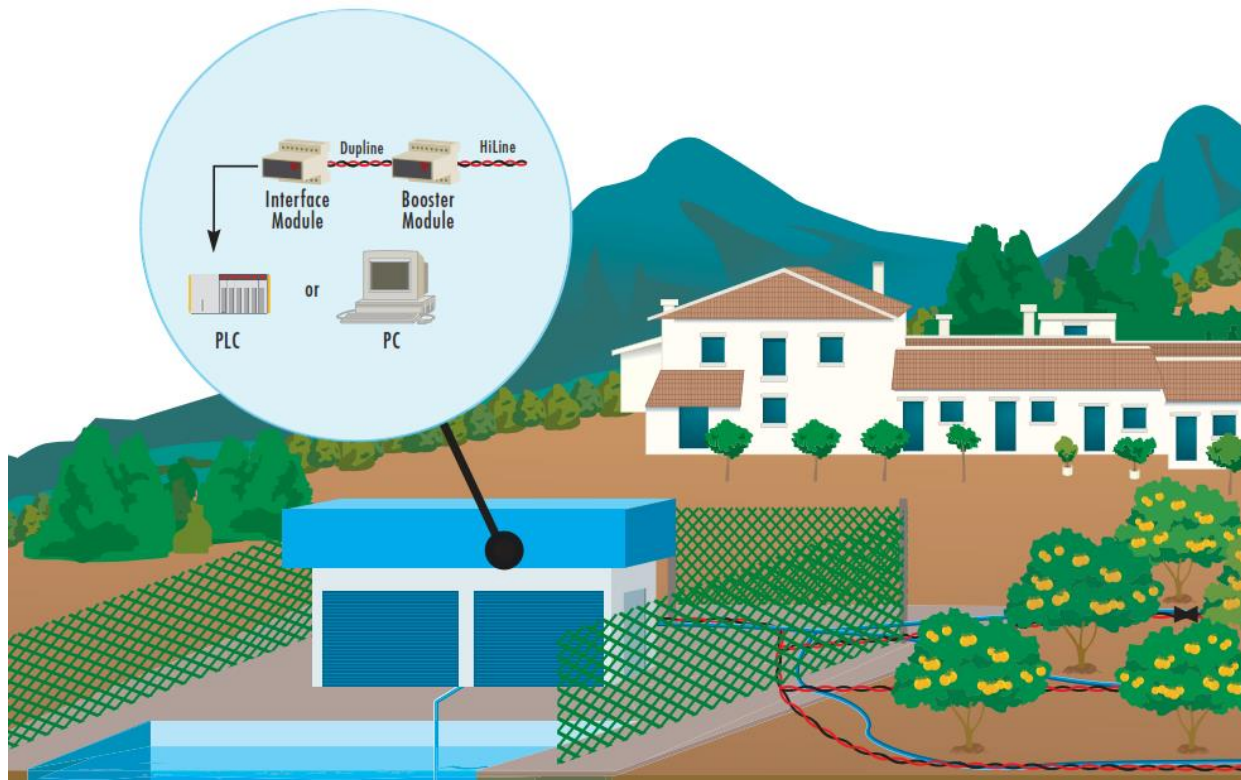
Product Solutions



Irrigation System

Traditional irrigation systems are characterized by costly and complicated wiring. Each valve needs a separate hot wire running back to the Irrigation controller which can be located kms away. Expansion is also a problem due to the high cost and impracticality of getting extra wires for valves that need to be added to the system.

Dupline irrigation bus system offers a simpler and more flexible wiring concept than traditional systems. By running the power, valve control signals and pulses from flowmeters on a single 2-wire cable, Dupline reduces the wiring and cable cost significantly and makes expansion easy.



Product Solutions



Master Module



Valve Module



Dupline Booster

Energy Management

Carlo Gavazzi offers a broad range of solutions for monitoring power quality as well as the management of energy cost and consumption (energy management). Our product range includes panel and DIN mount displays and controllers, power quality and energy transducers, as well as software for collecting information from a network of meters. Our meters and transducers can monitor most electrical parameters including current, voltage, power factor, demand, energy, power (real and reactive). We can also monitor both current and voltage harmonic content up to the 50th harmonic. This harmonic analysis also includes the phase angle between the harmonic current and voltage allowing the user to determine if the harmonic is generated from the load or is coming from the source. Our meters and transducers also feature Analog outputs, relay outputs, digital inputs, and serial communications using either Modbus or N2-Metasys protocols. Also, many of our meters feature a storage module which allows logging or storage of alarms.

Our extensive range of energy management and power quality products are used in building automation systems, power substations, motor monitoring, resource industries, and in commercial buildings.



Energy Management Software

Carlo Gavazzi offers 2 software packages for monitoring of our power quality meters. Wattsoft 2 is a basic software package for monitoring real time data from up to 12 meters. Wattsoft 3 is a more advanced monitoring package which can monitor up to 255 meters (using suitable line drivers) and allows for management of alarms, advanced analysis of energy usage and costs, and viewing of electrical parameters graphically. Both Wattsoft2 and Wattsoft3 can be used with most meters manufactured by Carlo Gavazzi.



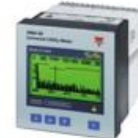
Product Solutions



Power
Analyzer



SPT/PQT-90
Power Quality
Transducers



Power and Energy
Quality Analyzer

MobileFrame Standard Solutions

MobileFrame's complete enterprise mobility solution allows organizations to easily create, deploy and administer robust native and HTML 5 web applications that work on any device with no custom programming required.

Their Smart Architecture™ and intuitive system eliminates time-consuming and expensive custom coding projects. With their platform, an app written one time will perform consistently across all devices in your organization from smartphones (iPhone, Android, etc.) to laptops and tablets (iPad, Android & Windows 8 devices).



■ Key Benefits of Going Mobile with MobileFrame:

Fortune 100 companies, government agencies and small businesses rely on MobileFrame every day to boost productivity while reducing costs. Some benefits of our mobile solution include:

- **A Complete Solution:** No need to buy a variety of third party software for sync, security, data and device management. Everything you need to create, manage and deploy apps is built-in.
- **Cross Platform:** Write once, deploy anywhere. Build your apps once and they'll work on any device, including everything from mobile devices to desktops.
- **Maximize Productivity:** Automate costly manual processes and decrease paperwork so your workforce can get more done.
- **Real-time Data Access:** Provide the right data to the right person at the right time. Whether It's your employees, customers or suppliers, everyone will have the information they need at their fingertips.

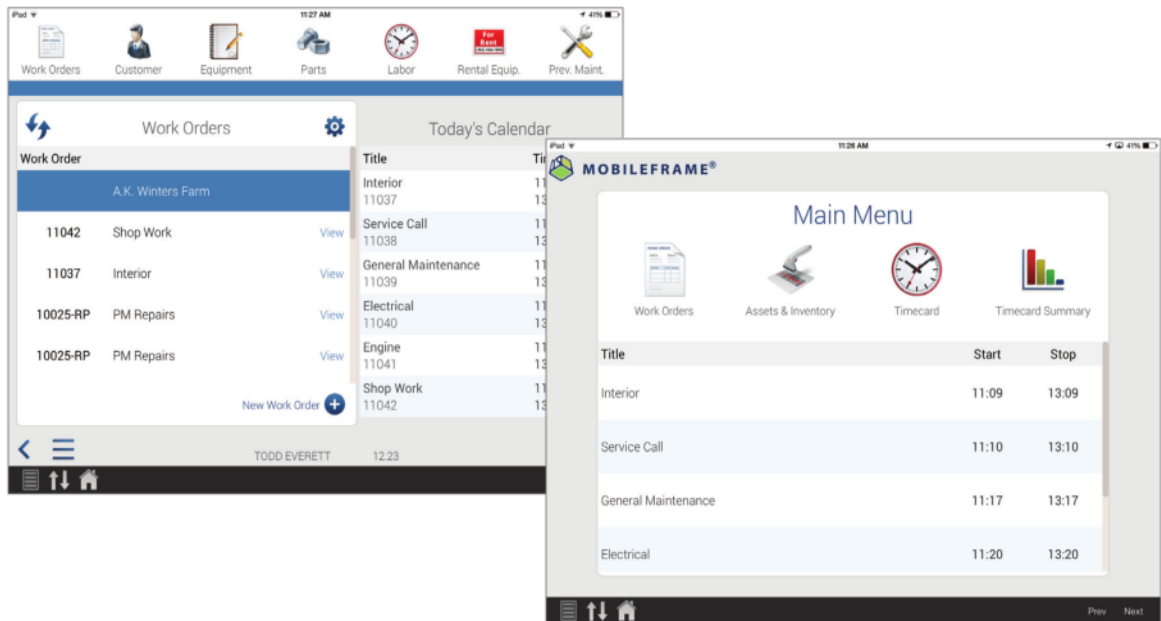
■ MobileFrame Field Service Solution:

- **Field service software for an entire organization**

Optimize your entire field service chain – from dispatch & work order prioritizing to parts used & labor costs. MobileFrame delivers information to your field techs when they need it most, on-site with the customer. Our software automates their service calls so your techs can focus on customer satisfaction instead of paperwork. MobileFrame allows dispatchers to create, assign & update work order based on any business rules your company requires. Once work orders are assigned, they're instantly deployed directly to technicians' mobile devices. Your dispatchers can use GPS tracking to find the technician nearest to the customer's site for any service call, and assign work orders based on skill sets, inventory on-hand, status, and history. Our solution maximizes efficiency and improves customer service levels.

- Integrates seamlessly for maximum ROI

MobileFrame's Field Service solution easily integrates to your existing backend systems (ERP, WMS, CRM, etc.) so you get the most out of your investments. While the software works great on its own, it also integrates seamlessly with our other solutions such as asset management, inventory tracking, timekeeping & more...



Inventory & Asset Tracking Software

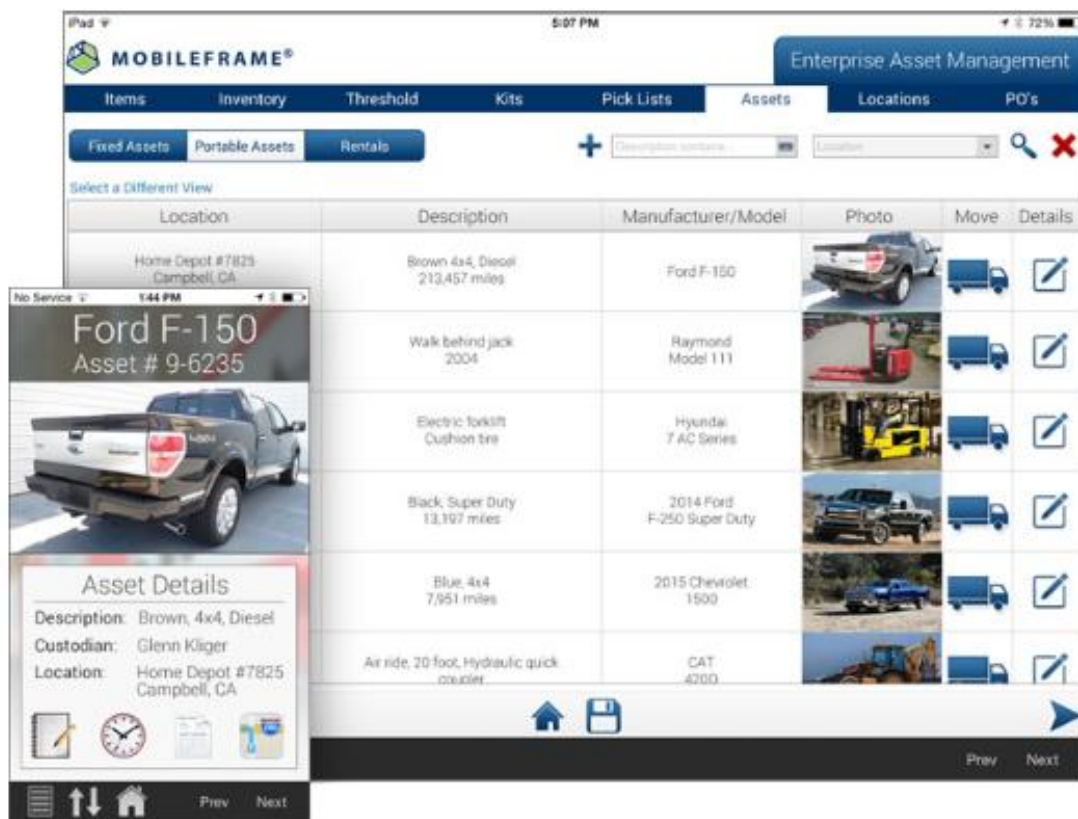
Inventory & Asset Tracking Software You Can Count On

Inventory and assets are among the largest figures on the balance sheet, therefore, effective inventory control and asset management are fundamental to ensure the success of any organization. With the increasing number of distribution centers and the globalization of business, the balancing act between having enough (but not too much inventory) and carefully overseeing the acquisition and utilization of assets is a serious challenge.

MobileFrame's Inventory & Asset Tracking Software enables the electronic collection of inventory & asset information and delivers real-time access to critical data to all of the stakeholders within your organization.

Our solution is a highly scalable, yet configurable, and designed to accommodate years of service even as your business processes change. The entire solution is written on the MobileFrame Platform, so the apps can be easily extended to include new features, all without the time or expense of custom development efforts.

MobileFrame's Platform gives your organization the ability to extend applications into other departments to meet any business requirement. All of our apps are fully customizable and provide the ability to collect rich data including digital photos, barcode scans, RFID data, digital signatures, sketches, voice notes, GPS data and more.

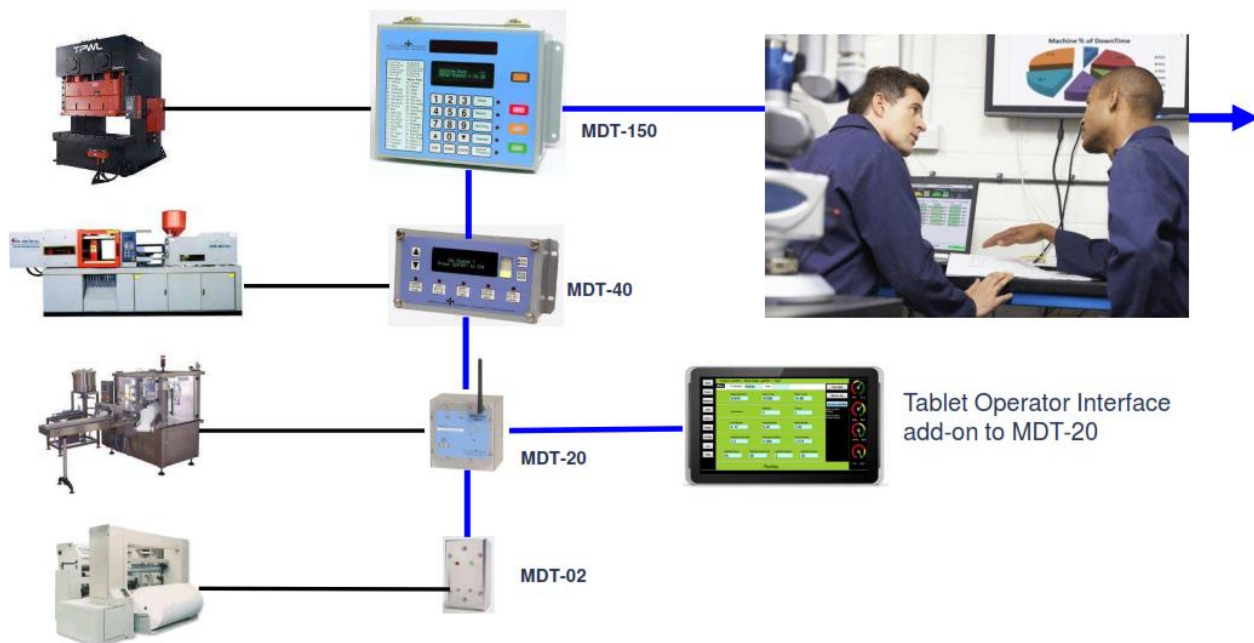


Production Process Standard Solutions

System Overview

ProductionACE is a practical, proven and affordable system to help you improve the productivity of your discrete parts manufacturing process. With it you can manage production, machines, people and OEE in real-time. The system connects directly to any older, “non-communicating” production equipment through a family of Machine/Operator Data Transducers (MDT). For newer, “intelligent” equipment, OPC or MTConnect provides the connection. Either way, you can match your data collection and operator interface requirements to individual machine characteristics for the most flexible and cost-effective system available today.

Machine Data Transducers (MDT) are Operator/Machine Interfaces that collect, display and transmit real-time data to a remote PCs. MDTs connect directly to any production machine using the existing electrical signals that operate the machine: switches/relays, photo/proximity sensors and voltages: 24V-120V AC/DC. MDTs communicate with remote PCs running Windows Production Manager or Job Manager Software to collect, display, analyze and share data throughout the Enterprise.



System Features

1. **Manufacturing Production Reporting:** Eliminate manual data collection, transcription.
2. **Monitor Equipment OEE:** Track and display machine status to analyze, improve production efficiency.
3. **Analyze Machine DownTime and Rejects:** Collect, analyze, eliminate causes for downtime and rejects.
4. **Visual Factory Displays:** Inform, empower, and motivate operators and Management with real-time data displayed on low cost, large screen TV displays.
- 5- **Production Scheduling:** Visual Production Scheduler produces real-world forecasts because it tracks job progress in real time.
- 6- **Preventive Maintenance:** Schedule *Predictive* Maintenance based on actual equipment and tooling/molds/dies run hours and cycle count.
- 7- **Link ERP and Manufacturing:** Link Master Production Schedule to production floor for dynamic scheduling, accurate Job completion forecasts, automatic inventory and WIP updates.

Product Solutions



MDT-40



MDT-150



MDT-20



MDT-02

■ Eliminate manual data collection and reporting with Report Generator.

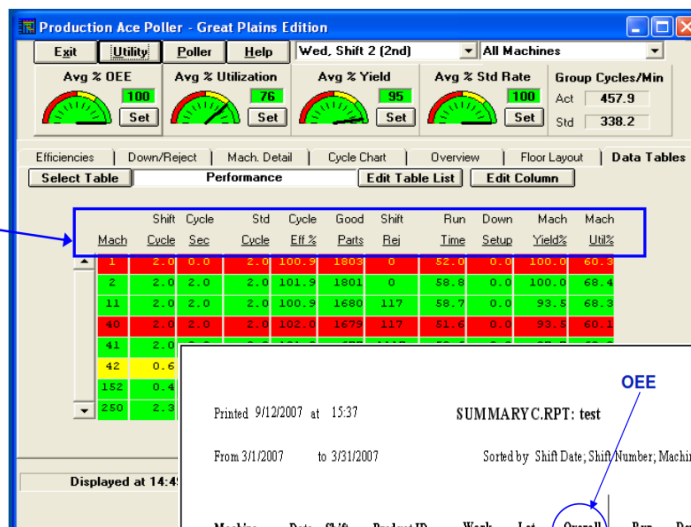
Live and printed reports available Enterprise-wide with Crystal Reports, and export to Excel.

■ Analyze OEE and production performance with Excel and Crystal Reports.

- Wide choice of selection criteria.
- Use standard reports, or make your own with Crystal Reports.
- Export to Excel or other applications.
- Sorting control for multiple levels: For example, by Date, Shift, Product, Machine, Material, etc.

User Customized Screens:

Point and click to select Data Elements to be displayed.



Printed 9/12/2007 at 15:37

SUMMARY.C.RPT: test

From 3/1/2007 to 3/31/2007

Sorted by: Shift Date, Shift Number, Machine Number

Page 8

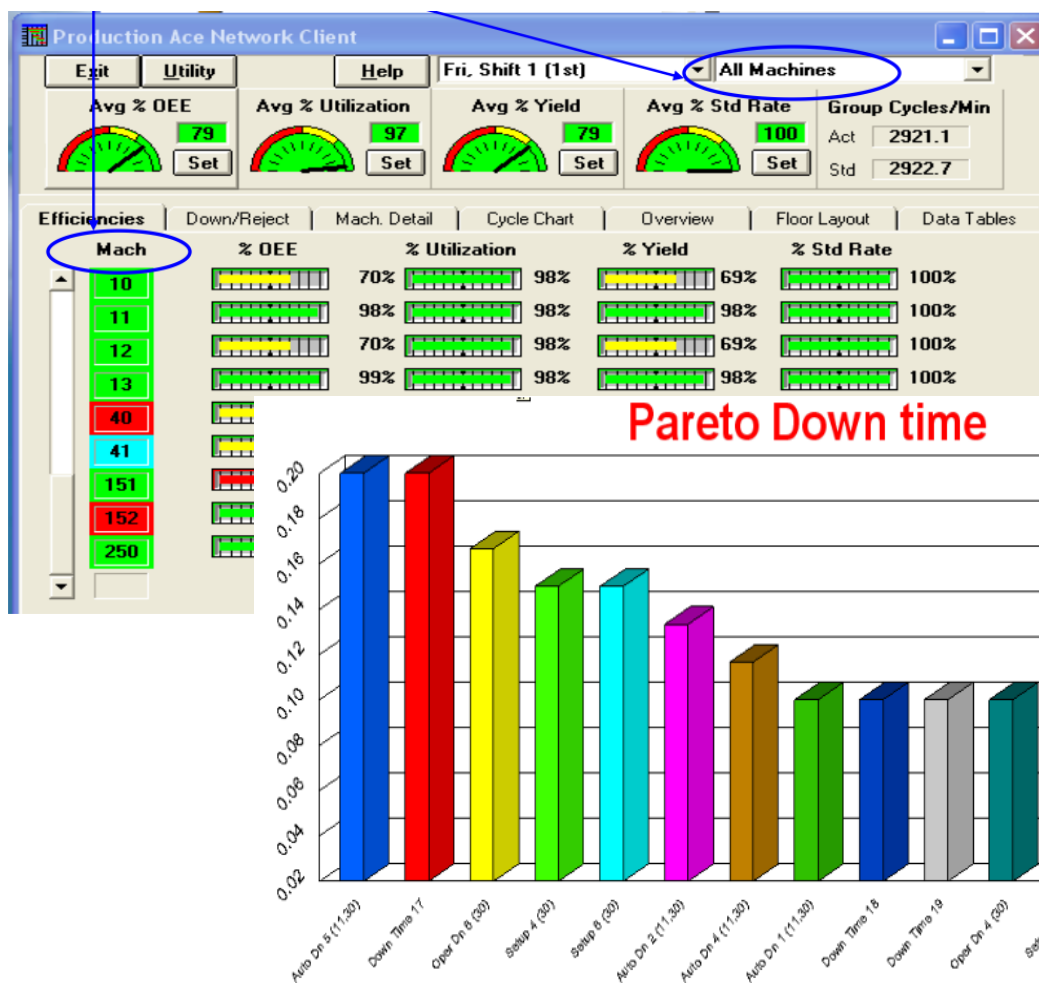
Machine	Date	Shift	Product ID	Work Order	Lot num	Overall Eff%	Run Hours	Down Hours	Machine Util %	Shift Parts	Shift Rejects	Yield %	Std. Cycle	Avg. Cyl	Cycle Eff%
NS 40 M7	3/2/07	DAY	R4M10219		nt	117.8	8.00	0.01	99.9	18,120	8	100.0	15.00	12.71	118.0
Machine Number - 7						117.8	8.00	0.01	99.9	18,120	8	100.0			118.0
FN 1000 M8	3/2/07	DAY	245279		nt	91.4	7.22	0.78	90.3	1,792	36	98.0	60.00	58.04	103.4
Machine Number - 8						91.4	7.22	0.78	90.3	1,792	36	98.0			103.4
FN 1000 M9	3/2/07	DAY	3168-430276		nt	125.1	7.85	0.15	98.1	2,414	14	99.4	30.00	23.40	128.2
Machine Number - 9						125.1	7.85	0.15	98.1	2,414	14	99.4			128.2
FS 80	3/2/07	DAY	51B18101680		nt	0.0	0.00	8.00	0.0	0	0	0.0	30.00	0.00	0.0
Machine Number - 10						0.0	0.00	8.00	0.0	0	0	0.0			0.0

- **Identify problems fast, before quality suffers, with real-time OEE displays.**

Track OEE, and its components: Availability/Utilization, Yield/Quality and Performance/Std Rate of individual machines, all machines, or a department/group.

- **Increase uptime, reduce downtime: collect and analyze causes for Downtime and Rejects with simple, yet powerful graphical tools.**

Downtime and Reject Causes can be reported by Machine, Job, Product, Shift, etc.



Sample Professional Services

- King Fahd Industrial Port– Tbox RTUs connected to Wonderware SCADA through UHF telecommunications – 2012
- Al Ain Municipality (UAE) Storm Water RTU/SCADA/CCTV – Tbox RTUs connected to Wonderware SCADA thru 3G telecommunications – 2013
- Operation, Maintenance and Upgrading of Storm Water Networks and Pumping Stations in Al Ain and Its Region. Phase 2 – SCADA and CCTV – 13 Pumping Stations. Al Ain – 2014
- Bio-Environment System – Temperature, Humidity, Access control system – Dubai, 2014
- ADM (UAE) RTU-based Irrigation Controller Network - Tbox based irrigation controllers connected to central SCADA thru 3G telecommunications – 2014
- ALAIN MUNICIPALITY (AAM) Operation, Maintenance and Upgrading of Storm Water Networks and Pumping Stations in Al Ain and its Region – 2014
- Replace of existing SCADA system – Wonderware to WebAccess SCADA system for 7 pumping stations – Al Ain Municipality – 2015.
- Improving and Developing the Traffic Movement at the School Area in Al Ain, 3 Sites, Gate barriers, ANPR cameras, CCTV and Controllers – Al Ain – 2015
- D6881-ASAB - Supply engineering, testing and commissioning of 6 nos Advantech gateways to communicate between Madinat Zayed Pumping Station (PAC RX3i) and ASAB RTUs (VersaMax) – Abu Dhabi – 2015
- Abu Dhabi Municipality (UAE) SubSoil Drainage Dump Station 3G communications – Mox RTUs connected to GE Cimplicity SCADA thru 3G telecommunications – 2015
- Abu Dhabi Municipality (UAE) RD-61 station Fire Alarm system replacement – Zeta Fire Alarm panels – 2015
- GCC (UAE) Instrumentation troubleshooting and replacement – E&H transmitters - 2015
- Al Ain Municipality - Water Reservoirs and Pump Station at Palaces Area Pilot Project – Al Ain – 2015
- INTERNATIONAL FUND FOR HOUBARA CONSERVATION (IFHC)(AAM) Main Water Supply Pipeline Station at Palaces Area – 2015



Think Beyond Automation

ETEK FZE

Address: Dubai Silicon Oasis Free Zone
SIT Tower, 6th Floor, Office 607

P.O. Box: 341081, Dubai - UAE

Tel: +971 4 343 4218, **Fax:** +971 4 343 4219

Mobile: +971 50 255 9474

Email: info@etek.me

Website: <http://www.etek.me>